

Microsoft Fabric

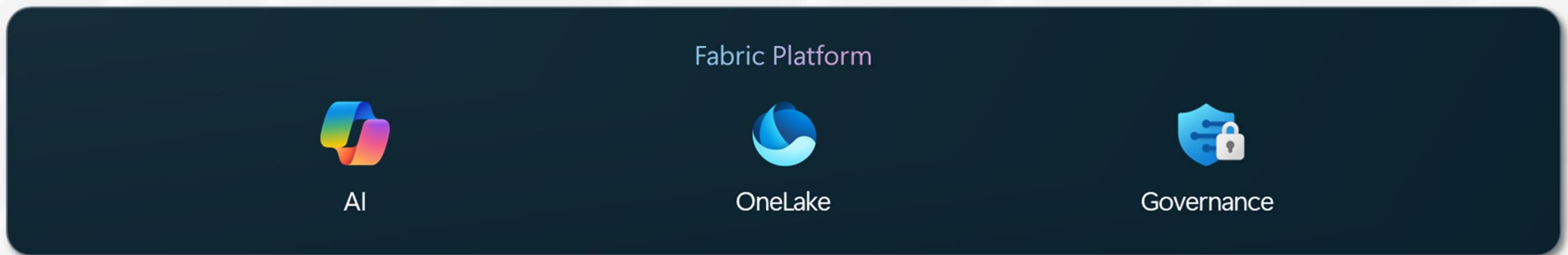
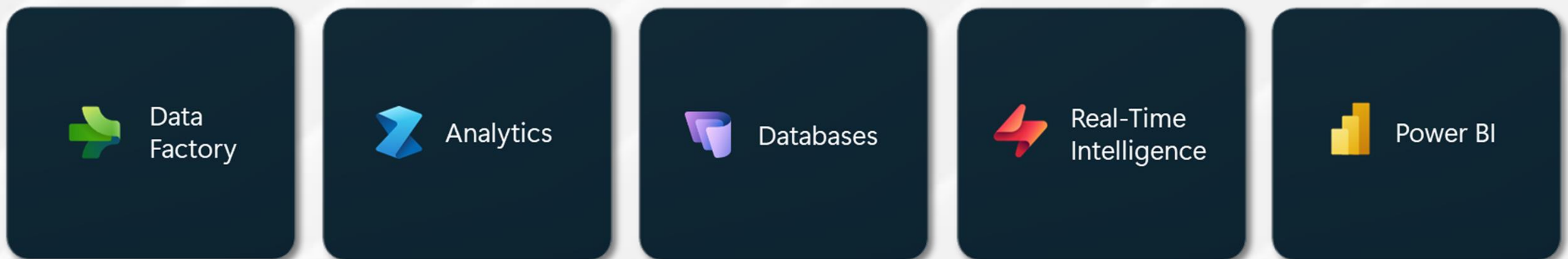
The Future of Data Analytics in the
Microsoft Ecosystem



THE UNIFIED DATA PLATFORM TO LEVERAGE AI

Microsoft **Fabric** is an end-to-end, unified analytics platform designed to unify data, democratize access, and integrate AI for simplified data management, enhanced collaboration, and accelerated innovation.

It offers an ideal solution to the challenge of data fragmentation, which frequently forces customers to piece together disparate services from various vendors - often incurring significant costs.



MAIN COMPONENTS

Cutting-edge Technology and Top-tier Quality



DATA FACTORY

Combines Azure Data Factory with Power Query. It features dataflows that provide an interface for ingesting data from hundreds of sources and pipelines that allow you to build complex workflows.



DATABASES

Fabric integrates cloud-scale databases to store, and query structured or semi-structured data, supporting transactional workloads, time-series analysis, and seamless connectivity across the data platform.



REAL-TIME INTELLIGENCE

Analyzes large volumes of observational data in real time from a variety of sources such as IoT devices, apps and more. Provides autoscaling, automatic data streaming, indexing, partitioning and visualization.

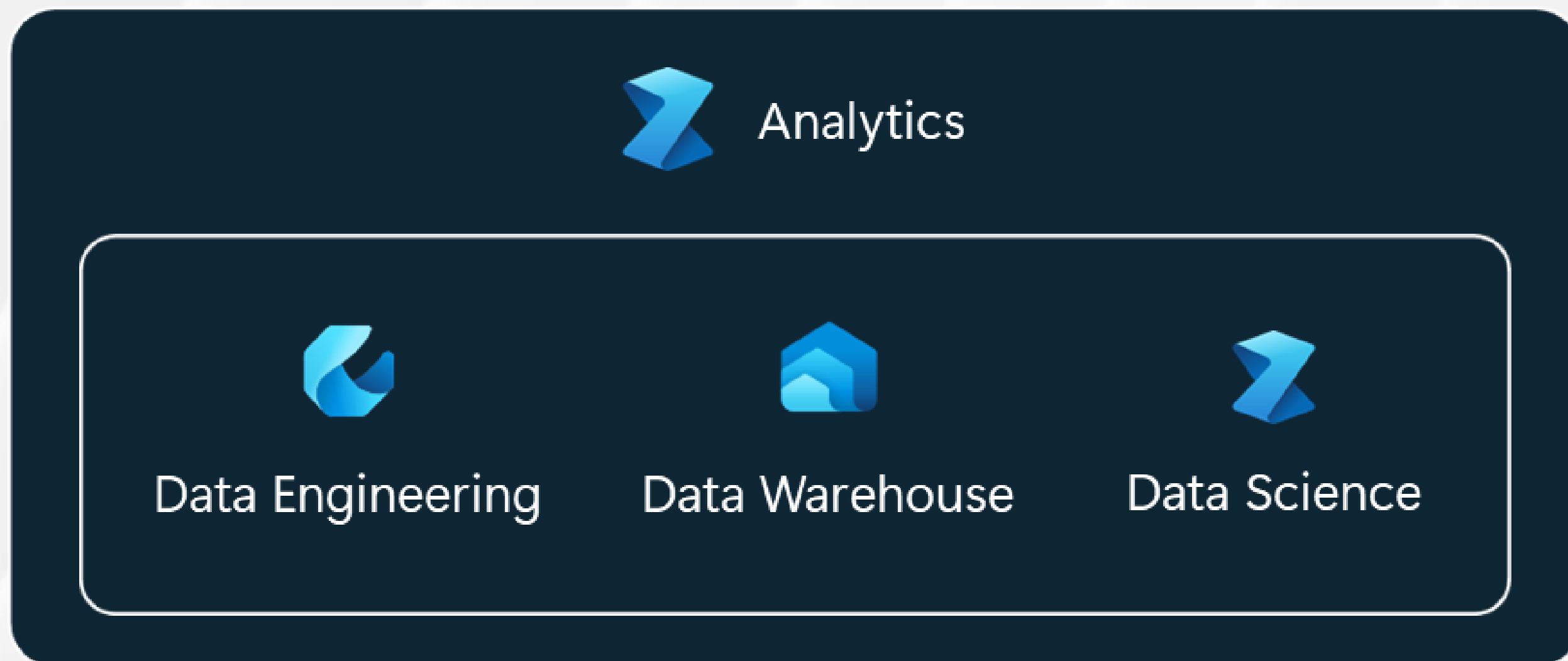


POWER BI

The world's leading Business Intelligence platform. Through OneLake, you can create reports and dashboards directly from your SaaS application. New features like Git integration and Copilot.

DATA ANALYTICS

Explore new ways to work with your data



DATA ENGINEERING

Design, build and maintain infrastructures and systems that enable their organizations to collect, store, process and analyze large volumes of data.

DATA WAREHOUSE

Offers a fully managed, cloud-native, and high-performance SQL engine for structured data storage, supporting enterprise-scale analytics, reporting and integration with PowerBI.

DATA SCIENCE

Data scientist can build, train and deploy machine learning models using notebooks, integrated ML libraries and seamless access to data across the unified platform.

ONELAKE

One unified Data Lake for your Organization



Single open format storage for all workloads

OneLake provides a centralized, unified data storage layer for all workloads within Microsoft Fabric, enabling seamless collaboration and eliminating the need for duplicated or siloed datasets.



Shortcut and Virtualization Support

With native support for shortcuts and data virtualization, OneLake lets you reference data from other locations inside or outside the organization without physically copying it, simplifying data sharing, reuse, and governance across teams and environments.



Delta Format by Default

All data in OneLake is stored in the open Delta Lake format by default, ensuring compatibility with various tools, versioning, time travel, and high-performance queries, while supporting ACID transactions for reliability in enterprise scenarios.



Built-in Security and Governance

OneLake integrates with Microsoft Purview, providing built-in support for data classification, lineage, access control, and auditing. This ensures consistent governance, security, and compliance across the entire data estate without additional configuration overhead.

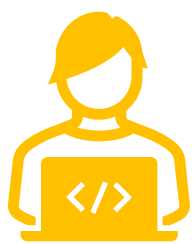
COPILOT

Simplify analytics with advanced AI algorithms and Copilot



Copilot for Data Insights

Use natural language to ask questions and generate insights directly from your data. Copilot helps uncover patterns, trends, and summaries without writing a single line of code.



AI-Powered Data Preparation

Copilot automates data transformation tasks, suggesting cleaning steps, joins, and enrichments using AI models. Accelerate data readiness with intelligent assistance in pipelines and notebooks.



Smart Reporting with Power BI

Generate visuals, summaries, and narrative explanations automatically in Power BI using Copilot. It enables faster dashboard creation and contextual storytelling from your data models.



Machine Learning Made Simple

Build, train, and deploy machine learning models with guided support. Fabric's AI environment simplifies experimentation and integrates seamlessly with Azure Machine Learning and open-source tools.

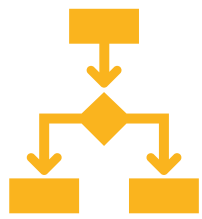
DATA GOVERNANCE

Unified Governance and Security across your entire Data Estate



Centralized Data Access Control

Define and enforce access policies across all data assets, ensuring the right people have the right access with role-based security and integration with **Microsoft Purview**.



Data Lineage and Traceability

Track the full journey of your data from source to report enabling better auditability, troubleshooting, and compliance with data transparency.



Integrated Sensitivity Labels

Apply and inherit sensitivity labels across datasets, reports, and pipelines to protect sensitive data and comply with organizational data protection standards.



Compliance and Auditing Tools

Monitor usage, access, and changes across Fabric environments with built-in logging, audit trails, and compliance reporting features.



Contact us!



Enrico Trogolo

e.trogolo@reply.it



Francesco Merangolo

f.merangolo@reply.it