

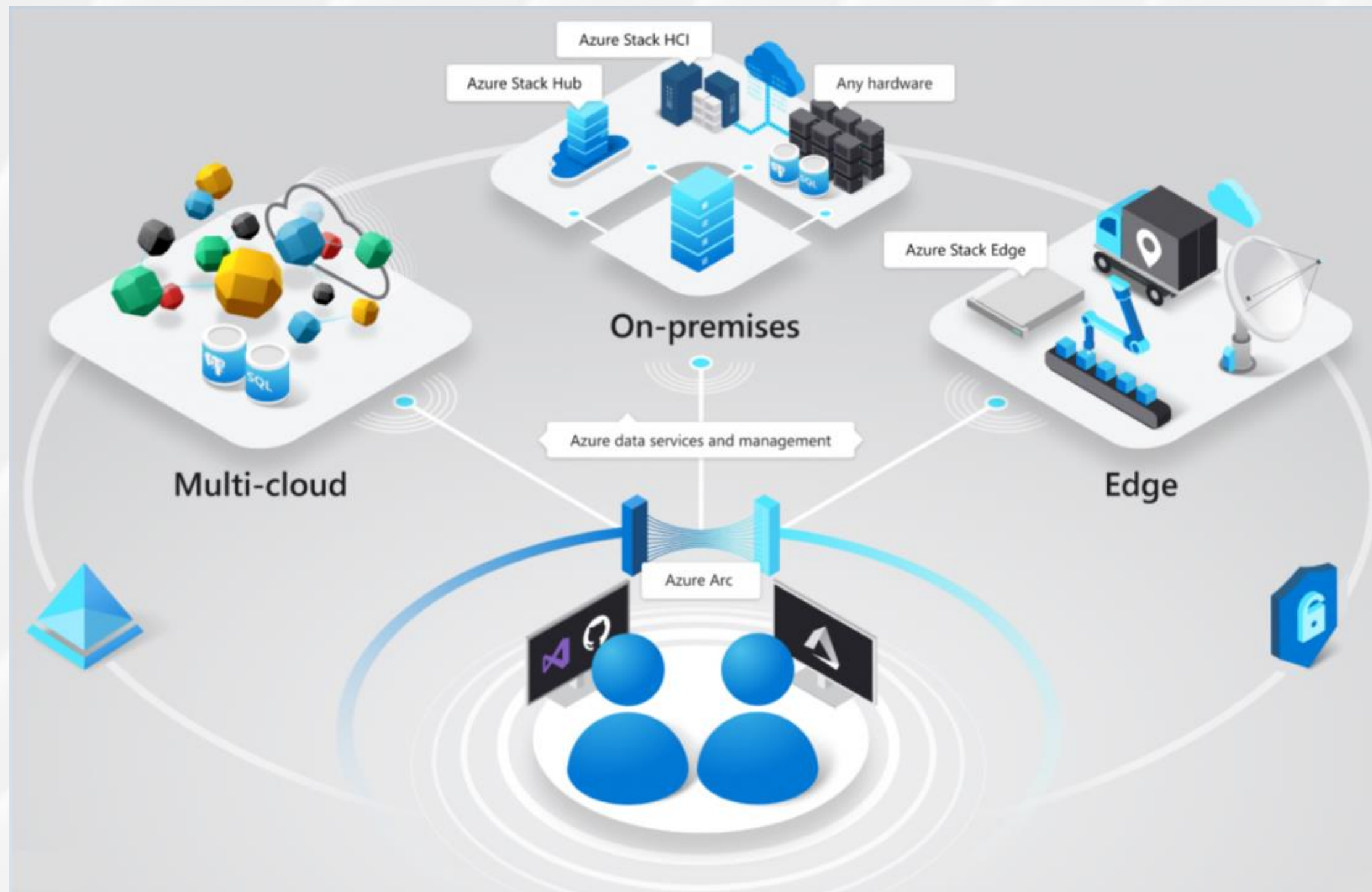
Azure Arc

Hybrid and multi-cloud management and solutions



AZURE ARC

Definition



Azure Arc is a bridge that extends the Azure platform to help you build applications and services with the flexibility to run across datacenters, at the edge, and in multi-cloud environments

Business Needs

Adopting Hybrid and Multi-Cloud adds complexity and introduce challenges

1

CENTRALIZE GOVERNANCE

Enforcing compliance requirements and centralizing governance across environments

2

PROTECT AND MONITOR RESOURCES

Enforcing security standards, centralizing observability across environments, monitoring costs in multi-cloud scenarios

3

MODERNIZE ON-PREM DATACENTERS

Giving new life to your on-prem by introducing azure serverless, azure managed data services, azure policy and more through Arc

Centralize Governance

Adopt Azure Arc to organize and govern across environments



UNIFIED CONTROL PLANE

Get Kubernetes clusters and servers that are sprawling across clouds and datacenters under control by centrally governing from a single place



ENFORCE COMPANY STANDARDS

Use Azure Tags and Azure Policy to enforce company standards wherever the resources are located



BRING AZURE TO YOUR ENVIRONMENT

Use familiar Azure services and management capabilities, regardless of where your resources live

Protect and Monitor

Adopt Azure Arc to secure and observe resources with Azure battle-tested tools



MICROSOFT DEFENDER FOR CLOUD

Deploy Microsoft Defender for cloud on your servers and Kubernetes clusters across clouds and datacenters to secure them



AZURE MONITOR SUITE

Deploy Azure Monitor and Azure Monitor for Containers in an effortless way and get a production-ready managed observability platform on any site



Modernize Datacenters

Bring Azure App and Data services anywhere with Azure Arc



RUN APP SERVICES ANYWHERE

Deploy and manage azure app services on any Kubernetes cluster, including Azure functions, Azure logic apps, Azure event grid and Azure API Management



RUN AZURE SQL ANYWHERE

Deploy and manage Azure SQL, Azure PostgreSQL securing your data assets across on-premises, clouds and edge Kubernetes clusters



ONBOARD SERVERS, SQL SERVERS, VMWARE VCENTERS, SCVMM

Manage your entire environment together by projecting your existing non-Azure and/or on-premises resources into Azure Resource Manager

Key Features

Benefits of adopting Azure Arc



CONSISTENCY

for governance, inventory and management of resources and workloads



ZERO TOUCH SECURITY AND MONITORING

on any resource and workload across environments



UNIFIED EXPERIENCE

The same tooling, regardless on where the workload is running, can be used



NEW LIFE TO OLD DATACENTERS

with Azure managed app services and data services

Effortless Deployment

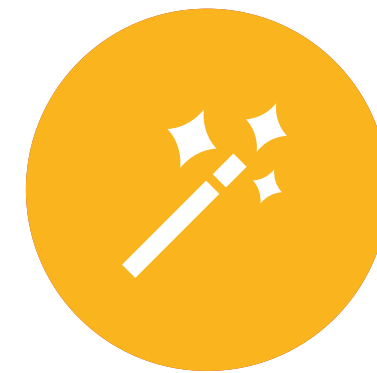
Two efficient approaches to deploy Azure Arc



Interactively

suitable approach for installing the Azure Arc agent on a small number of servers. Different options:

- Azure Portal
- Powershell script
- Windows Admin Center
- Azure ARC Setup Wizard



At Scale

more efficient solutions for installing the Azure Arc agent on multiple servers at the same time. Different options:

- Configuration manager script
- Group Policy
- Ansible Playbook
- Automation Update Management
- SCVMM enabled servers



Contact us!



Paolo Vicco

p.vicco@reply.it



Lorenzo Cannillo

l.cannillo@reply.it